



Basic Functional Behavior Assessment/Positive Behavior Support Plan

Basic Student Information

Student: _____	Date: _____
School: _____	Medications: _____
Parent(s): _____	Parent Phone: _____
Caseload Teacher: _____	Date of next PBSP review meeting: _____

Team Members

Teacher: _____	Special Ed Teacher: _____
SSW/Psychologist: _____	Administrator: _____
Parent: _____	Student: _____
Other: _____	Other: _____
Other: _____	Other: _____

Data Collection Checklist

Indirect	Initials/Date	Direct	Initials/Date
Record Review		Consultant Observation	
Behavioral Logs/Disc. Reports		ABC Data Collection	
Structured Interviews		Staff Direct Observation	
Rating Scales:		Other Directed Data Collection:	
Reports From:			

Strengths & Successes

(Include students preferred areas on interests, activities, classes, relationships, make sure to include behavioral, academic & social strengths)

--

Target Behavior Identification (Prioritized)

1.
2.
3.

Previous School-Based Interventions & Strategies for Target Behaviors

Previous School-Based Intervention/Strategy	When	Student Response

Specification/Operational Definition (include baseline data)

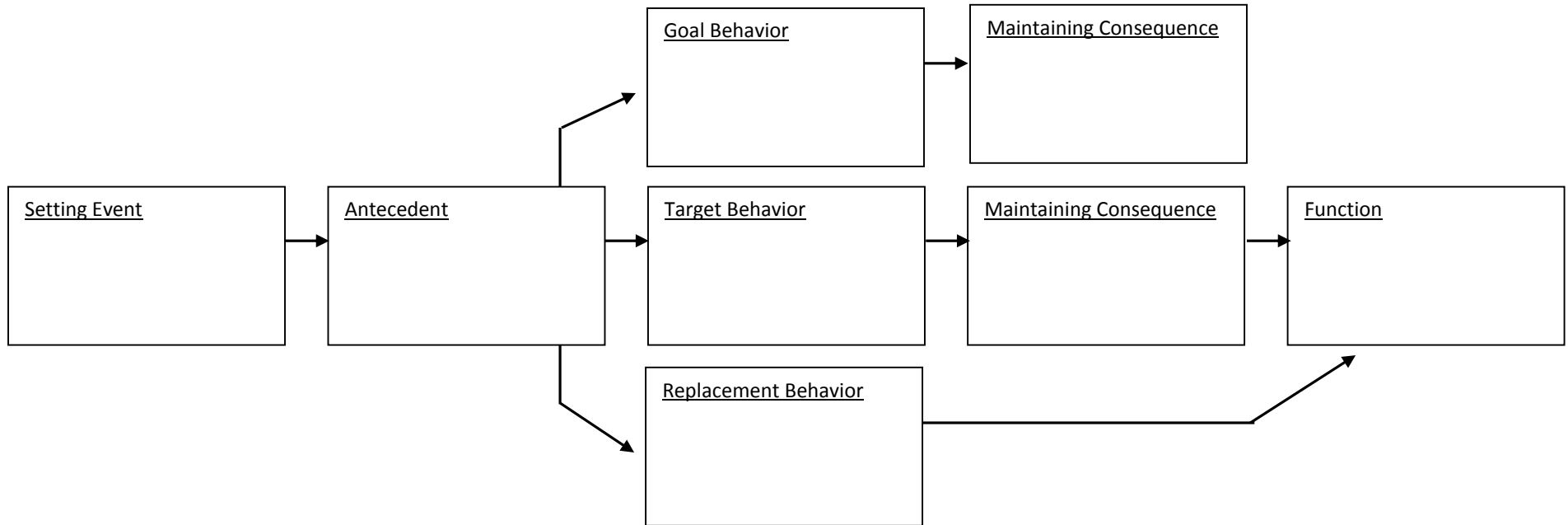
A		B	C
What is happening before the behavior occurs?		Describe the target behavior & how often it occurs. (frequency, intensity & duration)	What happens after the target behavior occurs? What is the response from the staff, peers, etc?
Setting Event	Antecedent		
1.			
2.			

Hypothesis Statement

**When [this] occurs [antecedents/setting events],
 the student does [this] (describe the behavior),
 in order to get or avoid [this] (function of the behavior).**
 (Be sure to include other relevant factors that may be having an impact on the behavior.)

1.	
2.	

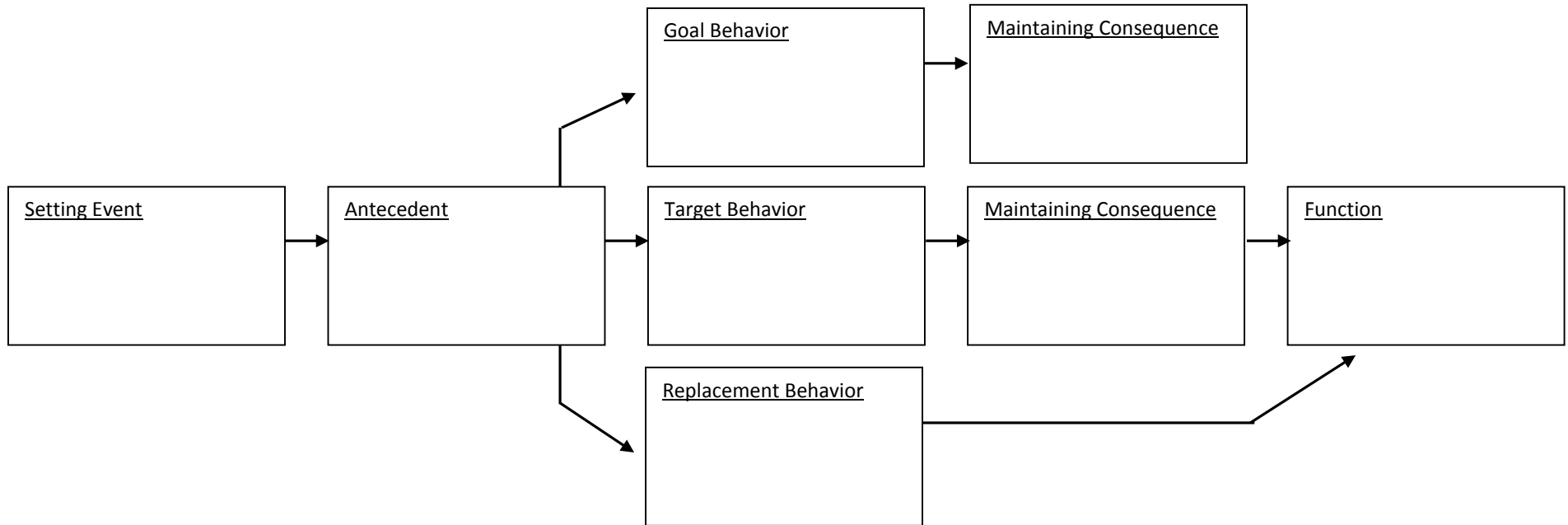
Competing Pathways for Target Behavior:



Brainstorming Interventions & Strategies

A	B	C	D
Setting Event Strategies	Antecedent Strategies	Teaching Strategies	Consequence/Response Strategies
Prevention: How will staff adapt the environment to reduce or eliminate setting events & antecedents? May be permanent or temporary. Examples include: PBIS classroom management, accommodations and modifications to work, communication with medical personnel, visual strategies, sensory diet, etc.		Teaching: What skills can be taught to replace or meet the same function as the student's target behavior?	Response: How will staff respond effectively & consistently in order to support positive behavior and reduce the intensity and frequency of the target behavior?

Competing Pathways for Target Behavior:



Brainstorming Interventions & Strategies

A	B	C	D
Setting Event Strategies	Antecedent Strategies	Teaching Strategies	Consequence/Response Strategies
Prevention: How will staff adapt the environment to reduce or eliminate setting events & antecedents? May be permanent or temporary. Examples include: PBIS classroom management, accommodations and modifications to work, communication with medical personnel, visual strategies, sensory diet, etc.		Teaching: What skills can be taught to replace or meet the same function as the student's target behavior?	Response: How will staff respond effectively & consistently in order to support positive behavior and reduce the intensity and frequency of the target behavior?



Mecosta-Osceola Intermediate School District

Basic Positive Behavior Support Plan

Basic Student Information

Student: _____ Date: _____

Caseload Teacher: _____ Date of next PBSP review meeting: _____

Cover page to be completed at the end-as a result of the PBSP process

Target Behavior Identification (Prioritized)

1.

2.

3.

Interventions (with specific descriptions)

Indicate what Target Behavior the intervention addresses

Prevention Strategies

Teaching Strategies

Response Strategies*

(How to acknowledge appropriate behavior; procedures to follow when behavior occurs)

*If emergency/crisis procedures are necessary, attach a crisis plan on a separate sheet.

Data Collection:

(Describe how data will be collected)